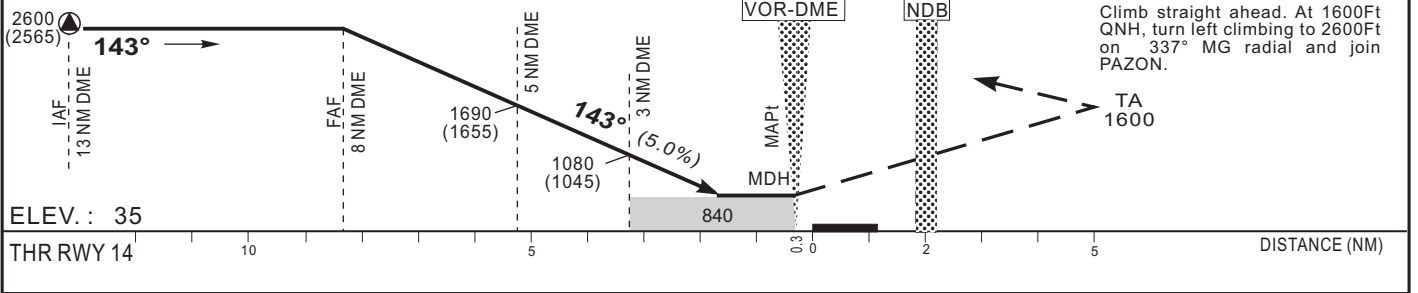


Distance to MG (NM)	FAP/FAF	7	6	5	4	3
Altitude (ft)	2600	2300	1990	1690	1390	1080

TRANSITION ALTITUDE : 2600



CAT	VOR-DME				Circling (*)				RVR for take-off CAT A - B - C : 400 CAT D : 400
	OCA (OCH)	MDA	MDH	RVR	OCA (OCH)	MDA	MDH	VIS	
A	837 (802)	840 (810)	840 (810)	1500	886 (799)	890 (800)	890 (800)	1500	Temps FAF / MAPt 8 NM KT MIN SEC KT MIN SEC 90 5 Min 20 140 3 Min 26 100 4 Min 48 150 3 Min 12 110 4 Min 22 160 3 Min 00 120 4 Min 00 170 2 Min 49 130 3 Min 42 180 2 Min 40
B	837 (802)	840 (810)	840 (810)	1500	906 (819)	910 (820)	910 (820)	1600	
C	837 (802)	840 (810)	840 (810)	2000	1005 (918)	1010 (920)	1010 (920)	2400	
D	837 (802)	840 (810)	840 (810)	2000	1005 (918)	1010 (920)	1010 (920)	3600	

Notes : - (*) Daytime only, OCH and MDH AAL
- RDH: 50 ft

CORRECTIONS : Deletion of altitude at 1NM MG (profile view).